

A photograph of the Palacký University Library building, a grand neoclassical structure with a prominent pediment and a central entrance. The building is light green with white architectural details. A Czech flag is visible on the facade. The scene is set outdoors with trees and a cloudy sky.

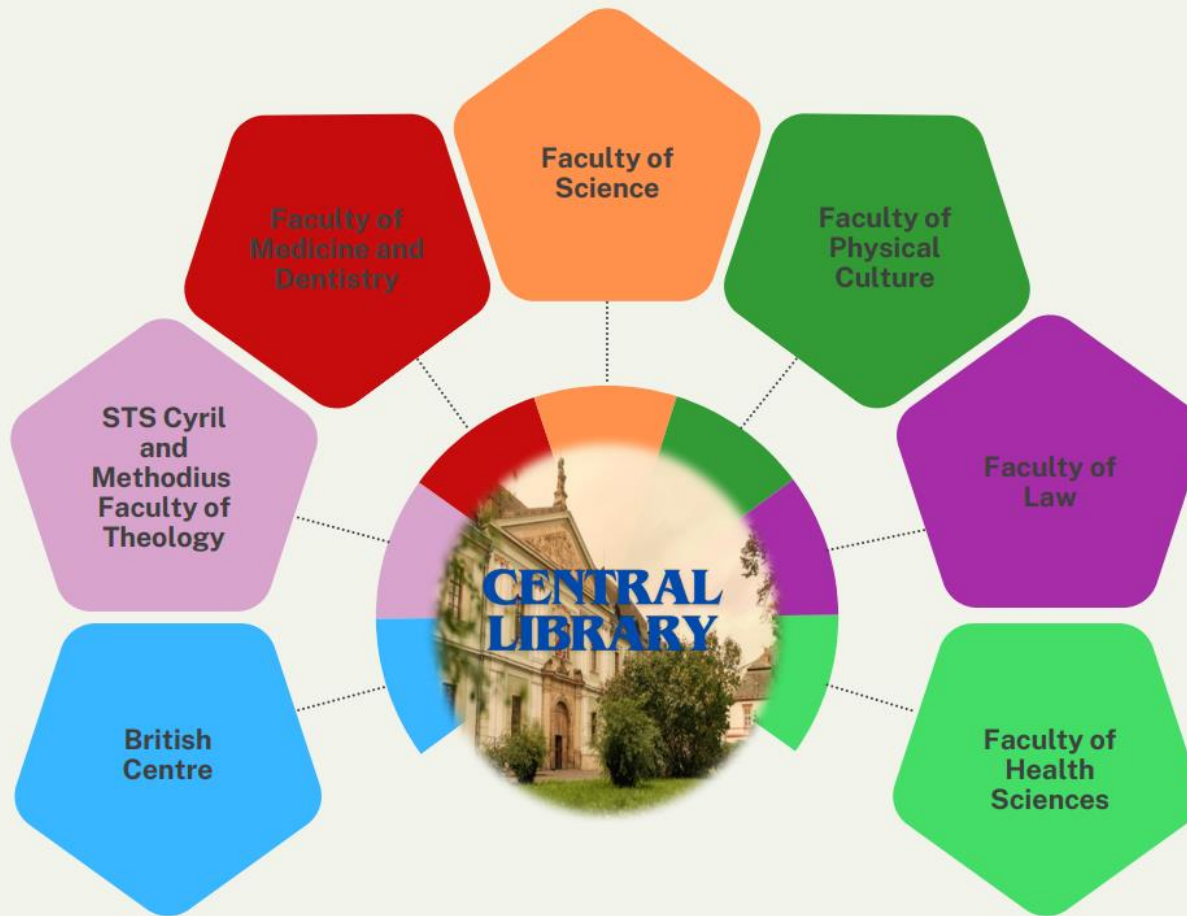
PALACKÝ UNIVERSITY

LIBRARY

Mgr. Eva Hejdušková, Medical Library UP
eva.hejduskova@upol.cz



Palacký University
Olomouc



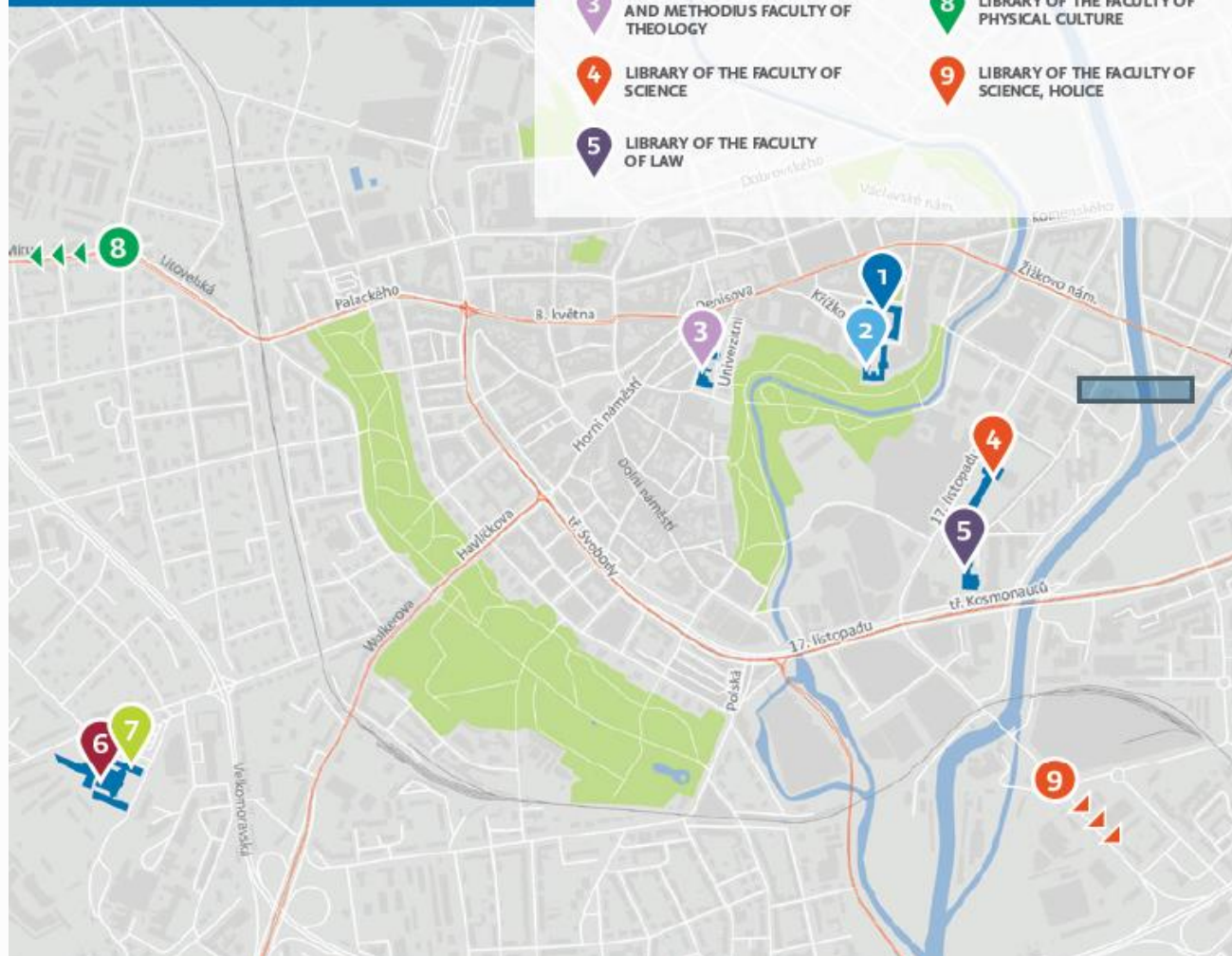
CENTRAL LIBRARY & FACULTY LIBRARIES



Library

Palacký University
Olomouc

- | | | | |
|---|--|---|--|
| 1 | CENTRAL LIBRARY UP ARMOURY | 6 | LIBRARY OF THE FACULTY OF MEDICINE |
| 2 | BRITISH CENTRE LIBRARY | 7 | LIBRARY OF THE FACULTY OF HEALTH SCIENCES |
| 3 | LIBRARY OF THE STS CYRIL AND METHODIUS FACULTY OF THEOLOGY | 8 | LIBRARY OF THE FACULTY OF PHYSICAL CULTURE |
| 4 | LIBRARY OF THE FACULTY OF SCIENCE | 9 | LIBRARY OF THE FACULTY OF SCIENCE, POLICE |
| 5 | LIBRARY OF THE FACULTY OF LAW | | |



MAP OF THE LIBRARY AND THE FACULTY LIBRARIES



Palacký University
Olomouc



Library

www.knihovna.upol.cz/en



facebook
fас6pооk

www.facebook.com/knihovnaUP



Instagram
knihovnaupol

@knihovnaupol



Entry to each part of the library is free.

Library card = ISIC card (except the British Centre)

CONTACTS

Palacky University
Medical Faculty
Hněvotínská 3
775 15 Olomouc
☎ 585 632 951
✉ klf@upol.cz



Palacký University
Olomouc



**CENTRAL
LIBRARY**

„AMOURY“

OPENING HOURS

Monday – Thursday: **8.00 am – 10.00 pm**

Friday: **8.00 am – 7.00 pm**

Saturday: **9.00 am – 4.00 pm**

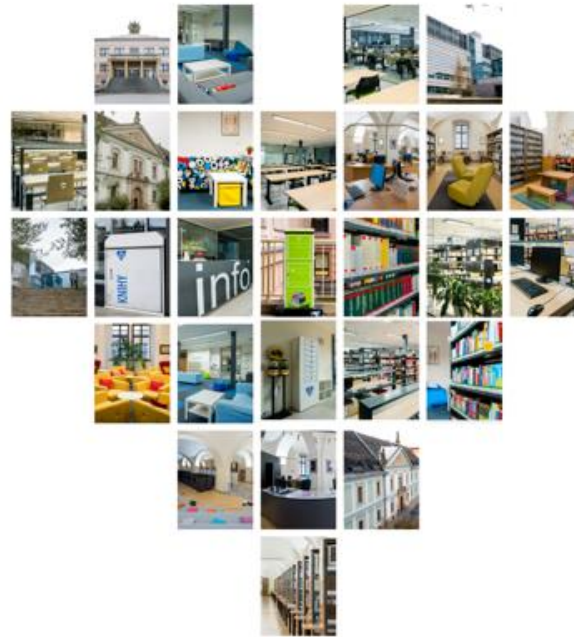
Night Reading Room – **nonstop**





Palacký University
Olomouc

- ✓ Information services
- ✓ Loan services
- ✓ Internet in the library
- ✓ PC rooms
- ✓ Study rooms and relax zone
- ✓ Printing, copying, scanning
- ✓ Bibliographic Information Services
- ✓ Information education
- ✓ Interlibrary loan services
- ✓ Courses
- ✓ Seminars
- ✓ Events



MEDICAL LIBRARY



Faculty of Medicine
and Dentistry

Palacký University
Olomouc



Palacký University
Olomouc

- ✓ The library is located in the “new building” of the Faculty of Medicine and Dentistry, inside the two glass corridors interconnecting the old and new building.



MEDICAL LIBRARY



Faculty of Medicine
and Dentistry

Palacký University
Olomouc





Palacký University
Olomouc



MEDICAL LIBRARY

Opening hours

Monday – Thursday: **8.00 am – 6.00 pm**

Friday: **8.00 am – 3.30 pm**

Night Reading Room „Šantavého sál“ – **nonstop**





Palacký University
Olomouc

- ✓ **Information services**
- ✓ **Loan services** (max. 15 loans per student)
- ✓ **Computers, free wifi**
- ✓ **Study rooms and relax zone**
- ✓ **Printing, Copying** (Your ISIC cards can be pre-charged by the staff of the Medical Library)
- ✓ **Scanning**
- ✓ **Informations education**



MEDICAL LIBRARY

Offers our services



Palacký University
Olomouc

- ✓ **Loan services (english medical books, textbooks)**
 - ✓ **Loan services (max. 15 loans per student)**
 - ✓ **Loan period is 30 days.**
 - ✓ **You can borrow max. 15 books.**
-
- ✓ **You can prolong your loans 3x.**
 - **By the telephone, e-mail, personally in the library or through your login in the union catalogue.**
 - **Active your account on the website:**
<https://library.upol.cz/arl-upol/en/forgotten-password/>.
 - **You can prolong if there is no reservation or no fine for the book!**



MEDICAL LIBRARY

Facilities & Services



Palacký University
Olomouc

Overdue fine: 2,- CZK per day per 1 book!

Reference books are for library use only. They are marked with a red stripe. They can be borrowed overnight until 9.00 am.



**MEDICAL
LIBRARY**

**Facilities
&
Services**



Palacký University
Olomouc

Returning books:

- ✓ In the medical library
- ✓ In the central library and in all faculty libraries
- ✓ Bibliobox

You can return your books in the „bibliobox“ 24 hours a day, 7 days a week.



MEDICAL LIBRARY

Facilities & Services



Palacký University
Olomouc

- ✓ All library branches are equipped with self-service copying and printing machines.
- ✓ The copying is a paid service, use your ISIC card with a pre-paid credit. <http://safeq.upol.cz/>
- ✓ The cards can be pre-charged in Medical Library.
- ✓ You can be paid in cash or by credit card.
- ✓ 1 page / 1,20 CZK
- ✓ Login in PC: **portal ID + password**



MEDICAL LIBRARY

Facilities & Services



Palacký University
Olomouc



**FREE
CHARGING
POINT**

**Rooms Nr. 2.525
and Nr. 2.542**



Palacký University
Olomouc



Relax

RELAX ZONE

Rooms Nr. 2.525
and Nr. 2.542





Palacký University
Olomouc

Night Reading Room

„Šantavého sál“ –
nonstop



STUDY ROOMS

Šantavého hall
&
and Nr. 2.542

Silent Study Room Nr. 2.542:

Mon – Thurs: 8.00 am – 18.00 pm

Fri: 8.00 am – 16.30 pm





Palacký University
Olomouc



MEMORABILIA

Faculty's
souvenirs





<https://www.knihovna.upol.cz/en/>

Palacký University Olomouc

Students Employees Alumni Contacts CZ



Library

Catalogues E-Sources Headquarters Branches Services Contacts Documents

UP > Library > Catalogues

Catalogues

The Library of Palacký University in Olomouc Catalogues

Union Catalogue Library of Palacký University Book Collection

Catalogs of collection

- Academia film Olomouc
- Archives of UP
- Arbeitsstelle Library
- Czech Academic City
- Global Development Education
- I. Poledňák's Library
- Library of the Department of Asian Studies
- Library of French center
- M. Tognier's Library
- P. Tigrid's Library



UNION CATALOGUE

Searching literature



Related sites

Record detail

Search results

Send by e-mail

Export

New query

Display formats

Zkrácený

Detail

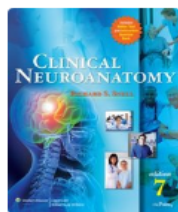
ISBD

Citace (ISO690)

Number of the records: 8

1 2 3 4 5 ▶ ▶ #

Clinical neuroanatomy



book

Borrow

To the basket

Title statement	Clinical neuroanatomy / Richard S. Snell
Personal name	Q Snell, Richard S., 1925-2015 (author)
Edition statement	Seventh edition
Publication	Philadelphia : Wolters Kluwer/Lippincott Williams & Wilkins, [2010]
Copyright notice date	©2010
Phys.des.	xviii, 542 stran : ilustrace
ISBN	978-0-7817-9427-5 (brožováno)
Note	Obsahuje rejstřík
Subj. Headings	Q nervový systém nervous system * Q neuroanatomie neuroanatomy
MeSH	Q nervový systém Nervous System * Q neuroanatomie Neuroanatomy
Form, Genre	Q učebnice vysokých škol textbooks (higher)
Conspect	611 - Anatomie člověka a srovnávací anatomie 37.016 - Učební osnovy. Vyučovací předměty. Učebnice
UDC	611.81/.83 , 616.8 , 611.8 , (075.8)
Country	Spojené státy americké
Language	angličtina
Document kind	Books

Call number	Barcode	Location	Sublocation	Info
ANA/105a (LF)	3135030765	LF	LF Knihovna	Date due 30 days
ANA/105 (LF)	3135030813	LF	LF Knihovna	In-Library Use Only



Portal of electronic information resources

Ezdroje.upol.cz



- ✓ Electronic information resources provide access to information used in the science and research.
- ✓ This portal offers primarily the licensed resources.
- ✓ Resources are available either from any place **at the Palacký University** or only within a particular faculty or **via remote access**.

Univerzita Palackého v Olomouci | Portal of electronic information resources

Resources overview | Searching | Remote access | Citations | Publishing | Help | News

Resources by: > By alphabet >

title
disciplines
Free-trials
Useful links

Resources in Alphabetical Order

GHChIJKL MNOPQRSTU VWXYZ

Description: Licenced resource Free resource Free-trial resource Metaresource

Resource name:	Resource description:
A	
AACR Journals	collection of medical journals [more info]
ABI/INFORM Collection	database focused on economy, business and ma
Academic Search Ultimate	multidisciplinary full-text database [more info]
ACS Journals	full-text journals published by American Chemica
AMBOSS	medical learning platform [more info]
American Film Institute Catalog	bibliographical database of films [more info]

Univerzita Palackého v Olomouci | Portal of electronic information resources

Resources overview | Searching | Remote access | Citations | Publishing | Help | News

EIZ portal > Remote access >

Remote access to the electronic resources

If you are outside the university you can access to the electronic information resources by these means:

- VPN (Virtual Private Network)**

VPN provides access to all resources that a student or university employee has access to, such as when connected to a UPOL network.

It is necessary to set up (install) a VPN connection on your computer once, then use the access addresses to resources as in the UPOL network.

Please use the guide [Access to the computer network via VPN](#) for setting this connection on your computer.
- Shibboleth**

Shibboleth does not require any special settings on your computer, it will only connect to resources that Shibboleth supports.

This connection is realized by logging in to the provider's site (links [Sign In / Institutional Login / Shibboleth](#) etc.), using the identifying data valid for the Portal UP web. For more information see the [Shibboleth](#) page.

Resources with Shibboleth access
- EZproxy**

It is a simple connection via special EZproxy links, which are generated directly for individual resources by the Portal of electronic information resources.

Each resource listed here on the portal has its own EZproxy link on its page, in the section "Additional Information", see [more here](#).



Palacký University
Olomouc

How you can join the Palacký University computer network?

2 types of networks:

1. EDUROAM network

Instructions for use can be found at:

https://wiki.upol.cz/upwiki/Pristup_k_pocitacove_siti/en →
setup instructions for Android, IOS, Windows, Mac...

Username (uživatelské jméno) = **your portal ID**

Password (heslo) = **a code assigned by the University**

2. UPOL WIFI network

You can find currently valid password after logging in to

<http://portal.upol.cz> in the section **Help/Helpdesk**.

WIFI is not available for all databases. (license)



Palacký University
Olomouc

If you face same troubles with conection...

Computer Network Administration

VPN, WI-FI → Troubleshooting

Staff:

Tomáš Kopečný, Dis.

tomas.kopecny@upol.cz

585 632 958

Jan Strádal

jan.stradal@upol.cz

585 632 419



Room: old building, door no. 1.015



Palacký University
Olomouc

Thank you for attention and see you in the library!

