



The Support Centre for Students with Special Needs

Mgr. Lucie Ješinová

The Support Centre for Students with Special Needs at Palacký University



Palacký University
Olomouc



Centrum podpory
studentů se specifickými
potřebami

The Support Centre for Students with Special Needs at Palacký University in Olomouc

- Centre provides comprehensive counselling and technical services

The Centre for Helping
Students with Disabilities

1996

The Support Centre for
Students with Special Needs

2012

Department of Special Education
at Faculty of Education
of Palacký University



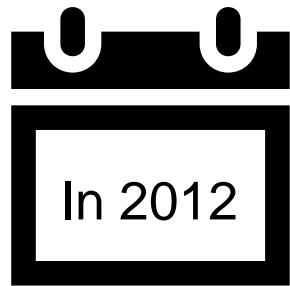
Cooperating with the Centre of
Adapted Physical Activities

University institution





Number of students with special needs (czech)



56 students



increase by 497 students

Current status of students
with special needs

610



Approximately

500 prospective
students

for the next academic year.





Who do we support?

**Students
with**

visual impairment

hearing impaired
students – sign and
spoken language users

reduced mobility –
lower and upper
extremity impairment

Neurodiverse students
- autism

ADHD/ADD

developmental learning
disabilities
(dyslexia, dysgraphia,
dysorthography,
dyscalculia)

mental disorder
or illness

impaired
communication
skills

somatic illness

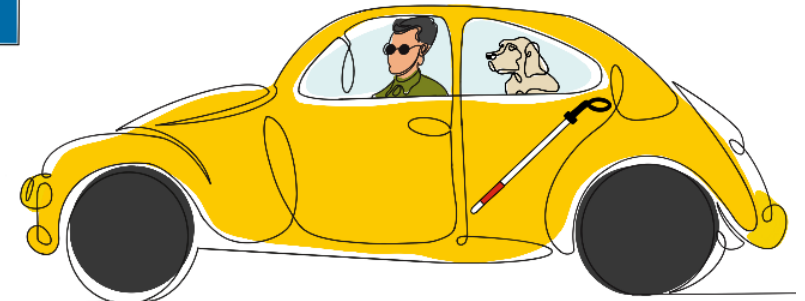
upcoming category –
exceptionally gifted



Service we provide

FOR STUDENTS WITH **VISUAL IMPAIRMENT**

- Modifications of study materials
- Personal and study assistance (study guide service)
- Training of spatial orientation and independent movement
- Learning to use special compensatory tools
- Recording services etc.
- Notes taking

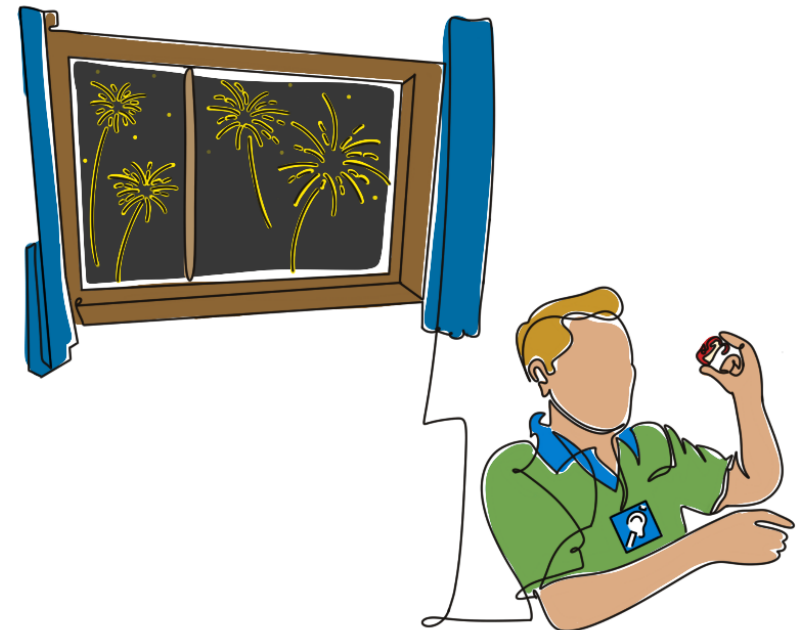




Service we provide

FOR STUDENTS WITH **HEARING DISABILITY**

- Interpreting to and from Czech sign language
- Oral interpretation
- Notes taking
- Simultaneous transcription
- Proofreading
- Individual teaching of foreign language





Service we provide

FOR STUDENTS WITH **PHYSICAL DISABILITY AND CHRONIC DISEASE**

- Accompaniment to classes and other study-related activities
- Accompany students to Medical Appointments
- Assistance in self-service
- Lectures notes-taking
- Map of barrier-free university buildings
Bezbariérová univerzita | CPS (upol.cz)

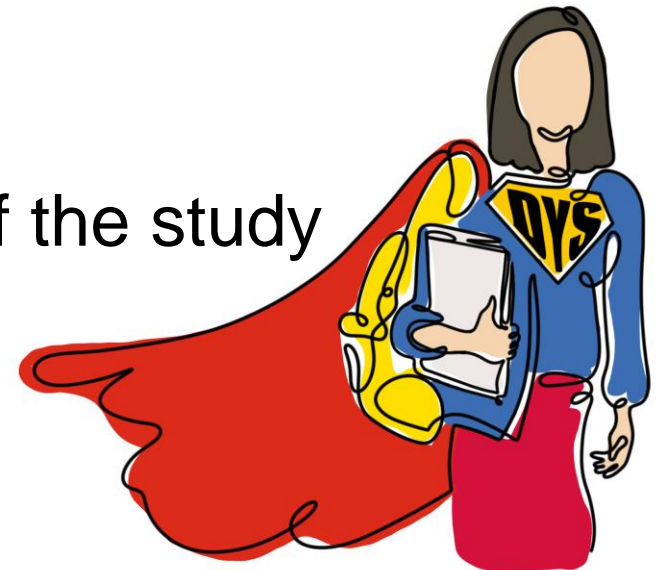




Service we provide

FOR STUDENTS WITH **SPECIFIC LEARNING DISORDERS**

- Diagnosis of specific learning disabilities
- Organizational measures (classroom adjustment, study group adjustment)
- Time adjustment
- Counseling regarding the organizational matters of the study
- Recommendations for a final state examinations
- Special courses focused on cognitive skills etc.





Palacký University
Olomouc

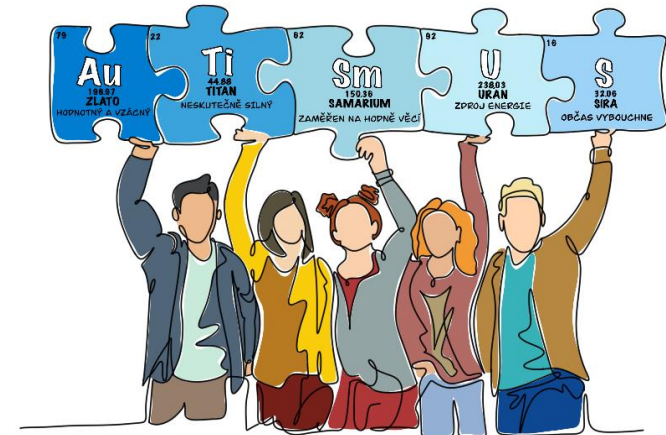


Centrum podpory
studentů se specifickými
potřebami

Service we provide

FOR STUDENTS WITH MENTAL ILLNESS AND NEURODIVERSE STUDENTS

- Proper psychological support
- Communication with the teachers
- Organizational measures (classroom adjustment, time adjustment)
- Exam modifications
- Courses focused on training individual skills
- Assisting services
- Orientation training, etc.





Palacký University
Olomouc



Centrum podpory
studentů se specifickými
potřebami

recording
equipment



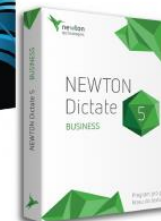
fatboy



wheelchair



ClaroRead



Newton
Dictate

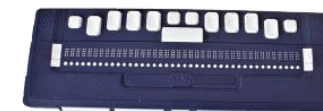
softwares

Rental of aids:



laptop

Braille lines



fuser



magnifying glass



tandem bike



track pad



induction
loops



IntelliKey USB





Other activities of the center

- Work with applicants
- Communication with teachers
- Courses for academic and non-academic staff (every term)

short term courses



communication with
students with SN

long term courses



text adaptation
space orientation
sign language

- Courses for staffs of the center
- Courses for students
 - Around 20 different courses during whole semester
- Preventive programs for children, pupils and high school students
- Publishing activities /print and video version





This information is entered
into the university
information system for
the teachers' use.

Students who want to be enrolled

1

For registration in the Centre – proper medical report or confirmation by counseling centre is needed.

2

Functional diagnosis and make recommendation for modifications.



21.					PDF	B0111A190006 - B - P	SPINT	studuje	1	A	LS	Olomouc	Ne	1
22.					PDF	B0111A190006 - B - P	SPANDR	studuje	1	A	LS	Olomouc	Ne	1
23.										A	LS	Olomouc	Ne	1
24.										A	LS	Olomouc	Ne	1
25.										A	LS	Olomouc	Ne	1
26.										A	LS	Olomouc	Ne	1
27.										A	LS	Olomouc	Ne	1
28.										A	LS	Olomouc	Ne	1

Doporučení z důvodu specifických potřeb studenta:

Studentka se specifickými poruchami učení
Návrh servisních opatření:

- navrhuje navýšit časový limit o 25 % u písemných i ONLINE zkoušek a testů
- doporučujeme navýšit časový limit na přípravu k ústní zkoušce o 25 %
- doporučujeme navýšit časový limit na zpracování čteného textu o 25 %
- doporučujeme navýšit čas určený k formulaci přesné promluvy při ústní zkoušce a minimalizovat časový tlak, bude-li to možné



Palacký University
Olomouc



Centrum podpory
studentů se specifickými
potřebami

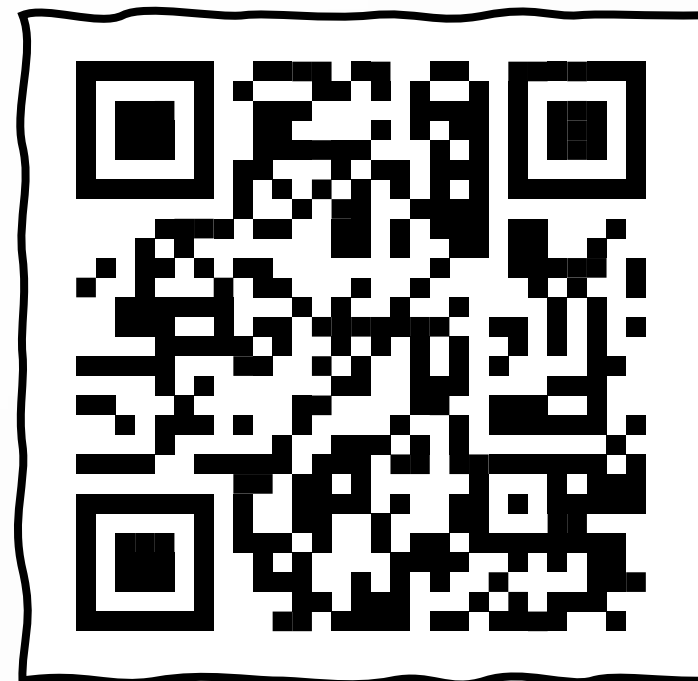
Mgr. Lucie Ješinová



lucie.jesinova@upol.cz



www.cps.upol.cz



Thank you for your attention!
